

RESTYLANE SKINCARE

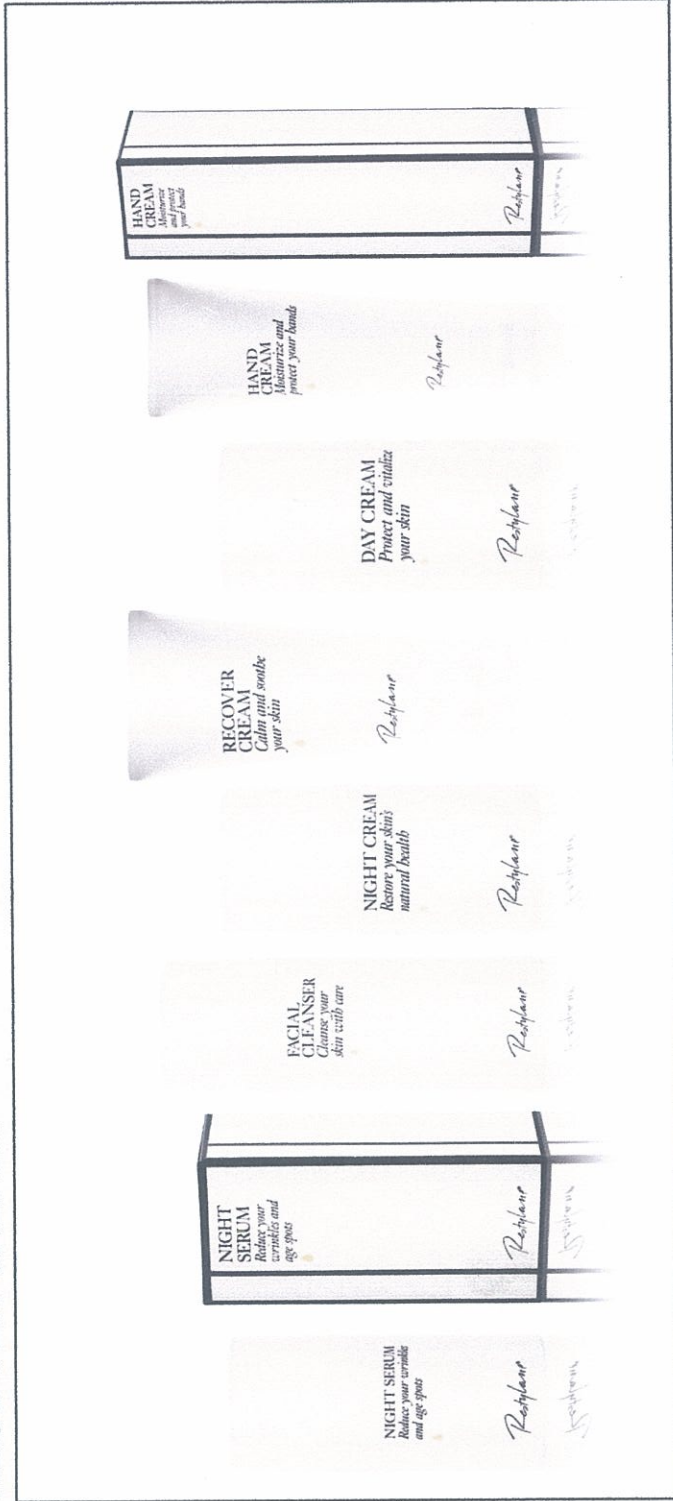
Rejuvenate your skin



Restylane®

PRODUCTS

- RESTYLANE DAY CREAM
- RESTYLANE NIGHT CREAM
- RESTYLANE NIGHT SERUM
- RESTYLANE FACIAL
- CLEANSER RESTYLANE HAND CREAM
- RESTYLANE
- RECOVER CREAM



Restylane®

PRINCIPLES

Restylane® Skincare products combine **carefully selected ingredients** that not only improve the skin barrier and increase hydration but also improve the overall look and beauty of the skin.

Scientifically proven ingredients which have undergone stringent product-specific testing ensure the creams' efficacy and meet the demands and needs of today's skincare.

Restylane®

TECHNOLOGIES

Cream series contains NASHA™-gel optimized for topical use:



Silk-like feeling and smoothness

- Silicone effect without the silicone
- Non-greasy and non-sticky

Improves **radiance and glow** of the skin

NASHA™ improves the **water-binding** ability of the stratum corneum, keeping the skin **soft and moist**.

NASHA™ improves the **feel and spreadability** of the creams

NASHA™ combined with the DMS reduces the **water loss (TEWL)** from the skin

Long-lasting

Q-MED unique: Patent protected

Restylane®

Appendix

Restylane

NASHA

- The unique thing with Restylane skincare is that it contains NAS HA particles which are crystal-shaped. Due to the patented stabilization process they also keep their crystal shape when incorporated in a topical skincare formulation. While the microscopic particles bind water and naturally improve hydration, they also reflect light, making the skin glow. On application, the crystal-shaped NAS HA particles tend to concentrate in the minimal lines and irregularities on the skin surface, making the skin smooth and hydrated where it is most needed

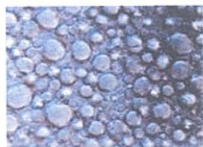
*Restylane*[®]

Appendix

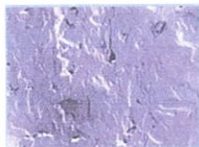
Restylane

Creating lamellar creams for strengthening the skin barrier

A lamellar cream has a structure that mimics the lipids in the skin where the lipids are assembled in a layered structure. DMS, used in several of our Restylane skincare products, is an example of a lamellar cream. The difference is shown below in the microscope pictures.



Conventional cream structure



Skin lipid structure

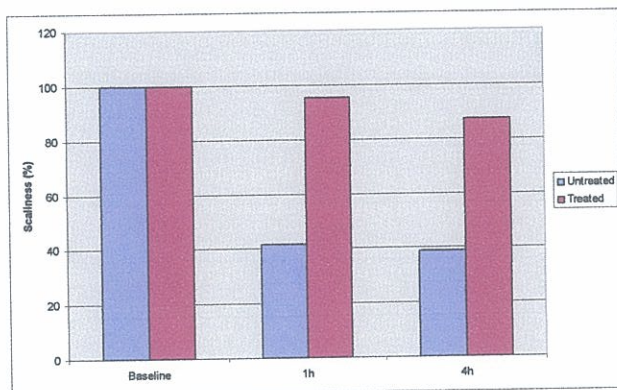


Lamellar cream structure

Using lamellar structure creates creams that are so similar to the skin, a lamellar cream base is optimal for strengthening the skin before aesthetic treatments and after the treatment for building up the skin's natural protection. It is also an optimal daily treatment for all kinds of skin.

Our unique NASHA technology

1.1 Hydration: Scaliness



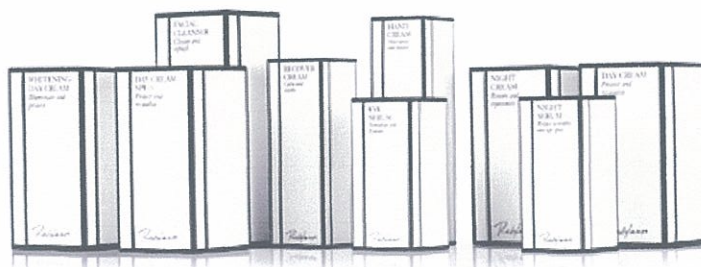
- 88% of study persons measured a reduction in scaliness compared to baseline and to untreated site

- 58% reduction in scaliness 1 hour after application and 61% reduction in scaliness after 4 hours

Figure 1. Significant difference in scaliness between treated and untreated skin area was seen after administration with Restylane Day Cream, $p < 0,001$

Restylane®

The product line



Restylane®

Restylane Facial Cleanser

- A mild product which produces a rich foam without causing unnecessary disruption of the skin barrier.

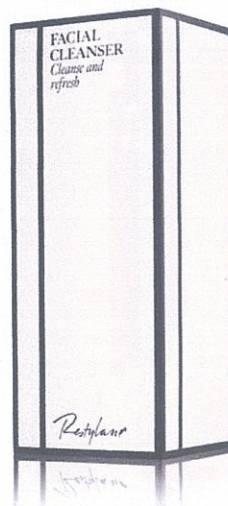
- Enriched with organic sunflower oil and ceramides that dissolve fat soluble impurities whilst protecting the skin from losing its own moisturizing lipids.

Product benefits:

- Gentle cleansing effect
- Preserves skin barrier function

Active ingredient:

- Ceramide 3



Restylane®

Restylane Day Cream

- Contains crystal-shaped NASHA™ particles which give the skin hydration, glow and fill out minimal lines.

- High doses of active ingredients

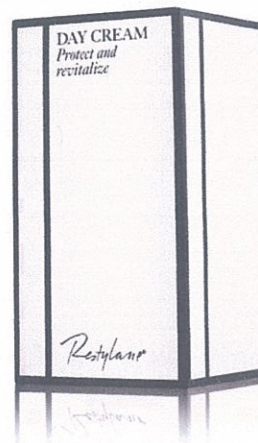
- Containing the unique lipid structure which is lamellar, it has a biological affinity to the skin itself, thereby strengthening the natural skin barrier.

Product benefits:

- Smooth glowing complexion
- Strengthened skin barrier function
- Fill out minimal lines
- Improved hydration of the skin

Active ingredients:

Niacinamide, Creatine, Acetylcarnitine, Q10, Piperine



Restylane®

Restylane Day Cream SPF 15

- Contains crystal-shaped NASHA™ particles which give the skin hydration, glow and fill out minimal lines.
- High doses of active ingredients and SPF 15
- Containing the unique lipid structure which is lamellar, it has a biological affinity to the skin itself thereby strengthening the natural skin barrier.

Product benefits:

- Smooth glowing complexion
- Strengthened skin barrier function
- Fill out minimal lines
- Improved hydration of the skin
- Protection from UV-radiation

Active ingredients:

- Niacinamide, Creatine, Acetyl, Carnitine, Q10, Piperine



Restylane Whitening Day Cream

- Contains several nutrients that reduce pigmentation, each with its own unique ability to influence the chain of reactions that lead to melanin formation in your skin.
- Contains crystal-shaped NASHA™ particles which give the skin hydration, glow and fill out minimal lines.
- Sun protection filters prevent further sun damage

Product benefits:

- Brighter skin
- Reduction of pigments spots
- Reduction of pigmentation
- Sun protection

Active ingredients:

- Chromabright, Niacinamide, Lingonberry seed oil



Restylane Night Cream

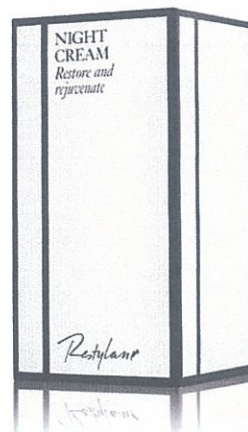
- Contains crystal-shaped NASHA™ particles which give the skin hydration, glow and fill out minimal lines.
- The Night cream does have the unique lipid structure which is lamellar, it has a biological affinity to the skin itself, thereby strengthening the natural skin barrier
- High doses of active ingredients reduce inflammatory processes in the skin. The cream also calms irritation.

Product benefits:

- Smooth glowing complexion
- Strengthened skin barrier function
- Calming effect on skin irritation and inflammations
- Fill out minimal lines
- Improved hydration of the skin

Active ingredients:

- 18-β-glycyrrhetic acid (liquorice extract), Avenanthramides (antioxidants from oats)



Restylane®

Restylane Night Serum

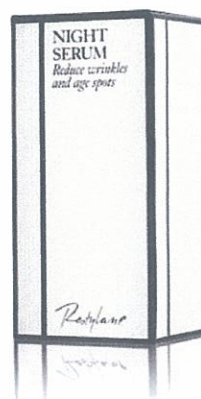
- A very active and concentrated microformulation with an ultra-fine structure which results in exceptional coverage, distribution and penetration of the active ingredients.
- Contains a high dose of retinol and due to a specific stabilization process and the optimized dispersion, results are maximized with few or no side-effects
- Reduces signs of photo-damaged skin such as deep and fine lines, pigment spots and loss of elasticity.
- Contains crystal-shaped NASHA™ particles which give the skin hydration, glow and fill out minimal lines.

Product benefits:

- Glowing, radiant complexion
- Reduction of fine lines and skin roughness
- Reduction of pigment spots

Active ingredients:

- Retinol, Tetrahydrocurcumin, Ceramide 3



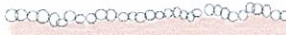
Restylane®

SLN* – stabilizing active ingredients and maximizing absorption into the skin

SLN is a technology where sensitive active ingredients are “embedded” into stable micro particles, for example Kemsphere used in Restylane Night Serum. Thereby the activity of the active is protected until applied to the skin. The actives are slowly released from the particles, thereby minimizing the risk for side effects such as irritations.

Ordinary creams:
Large particle size, cover
20% of skin surface

Microformulation:
Small particle size
covering almost 100%



As the size of the particles is so small, the particles are able to cover the skin surface much more efficiently than a conventional emulsion. Thereby the distribution of the actives is optimized.

*SLN= Solid Lipid Nanoparticles

Restylane Eye Serum

- The serum contains natural oils that make your skin both soft and bright, diminishing dark under eye circles.
- Restylane Eye Serum contains substances that improve the elasticity around the eye area. Eyeserum is able to inhibit vascular permeability in a dose dependent manner. This will reduce fluid accumulation, making the eyes less puffy and tired.*
- Contains NASHA™ particles which moisturizes the skin and adds luminosity and glow.

Product benefits:

- Softer skin around the eyes
- Reduction of eye bags
- Reduction of dark under eye circles

Active ingredients:

- Eyeseryl, Lingonberry seed oil



*Eyebag volume was measured using a technique called Fringe Projection.



Restylane Recover Cream

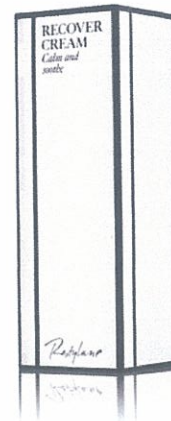
- A calming and soothing formulation for treating skin after aesthetic procedures.
- Reduces swelling and bruises (Arnica)
- Contains crystal-shaped NASHA™ particles which give the skin hydration, glow and fill out minimal lines.

Product benefits:

- Calming effect after aesthetic treatments
- Smooth and moisturized skin
- Strengthened skin barrier function
- Reduce swelling and bruises

Active ingredients:

Arnica, Rice bran extract



Restylane®

Restylane Hand Cream

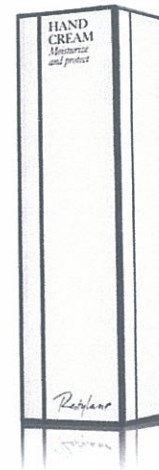
- A rich formula that restores the skin's protective barrier and moisturizing ability.
- Containing the unique lipid structure which is lamellar, it has a biological affinity to the skin itself, thereby strengthening the natural skin barrier
- Contains crystal-shaped NASHA™ particles which give the skin hydration, glow and fill out minimal lines

Product benefits:

- Soft and smooth skin
- Strengthened skin barrier function
- Improved nail quality

Active ingredients:

Vitamin B7, Rice bran extract



Restylane®

RESTYLANE SKINCARE KEY POINTS

Selected ingredients

Unique technologies

NASHA™ added

Scientific background



Combined Technologies for a skin repairing, regenerating and energizing proven effect.



- **Instant moisturizing effect**
- **Protects the skin's own barrier function over time**
- **Recommended for all skin types, specially sensible, dry or atopic skin**
- **Increases hydration of the skin**
- **Improves radiance and glow of the skin**

Restylane®

RESTYLANE NIGHT SERUM

STUDY RESULTS

11 patients follow up 12w

- 1.- Self assessment: **82% pts evaluated facial appearance as improved or much improved**
- 2.- Clinical evaluation: **79% (7 out of 9) were rated as improved**
- 3.- Digital photos: **effect in 78% pts**
 - reduction of pigmentation
 - improvement of uneven skin-tone
 - overall younger appearance

Restylane®

RESTYLANE NIGHT SERUM

STUDY RESULTS

- 4.- 82% pts had improvement in texture, pigmentation and UV-spots (Visia)
- 5.- 73% pts had significant reduction in wrinkle depth: At 12 w: Average improvement 42% in wrinkle depth (Primos)
- 6.- At 12 w 38% reduction(up to 56%) in skin roughness (Primos)

Note: It is recommended to wait 48h after a Restylane treatment or until the inflammation has disappeared

Restylane®